



**MULTI SPECTRAL IMAGING DRONE OF AKSU UÇAK BAKIM TEKNOLOJİSİ MTAL**



**PARTS OF MULTISPECTRAL IMAGING DRONE**



**DRONE FRAME**



**CONNECTION CABLES**



**REMOTE CONTROLLER**

**3 BAND MULTISPECTRAL CAMERAS**

- RED EDGE FILTER (RE)**
- NEAR INFRARED FILTER (NIR)**
- RED GREEN BLUE FILTER (RGB)**



**PROPELLERS**



**BATTERY CHARGER**

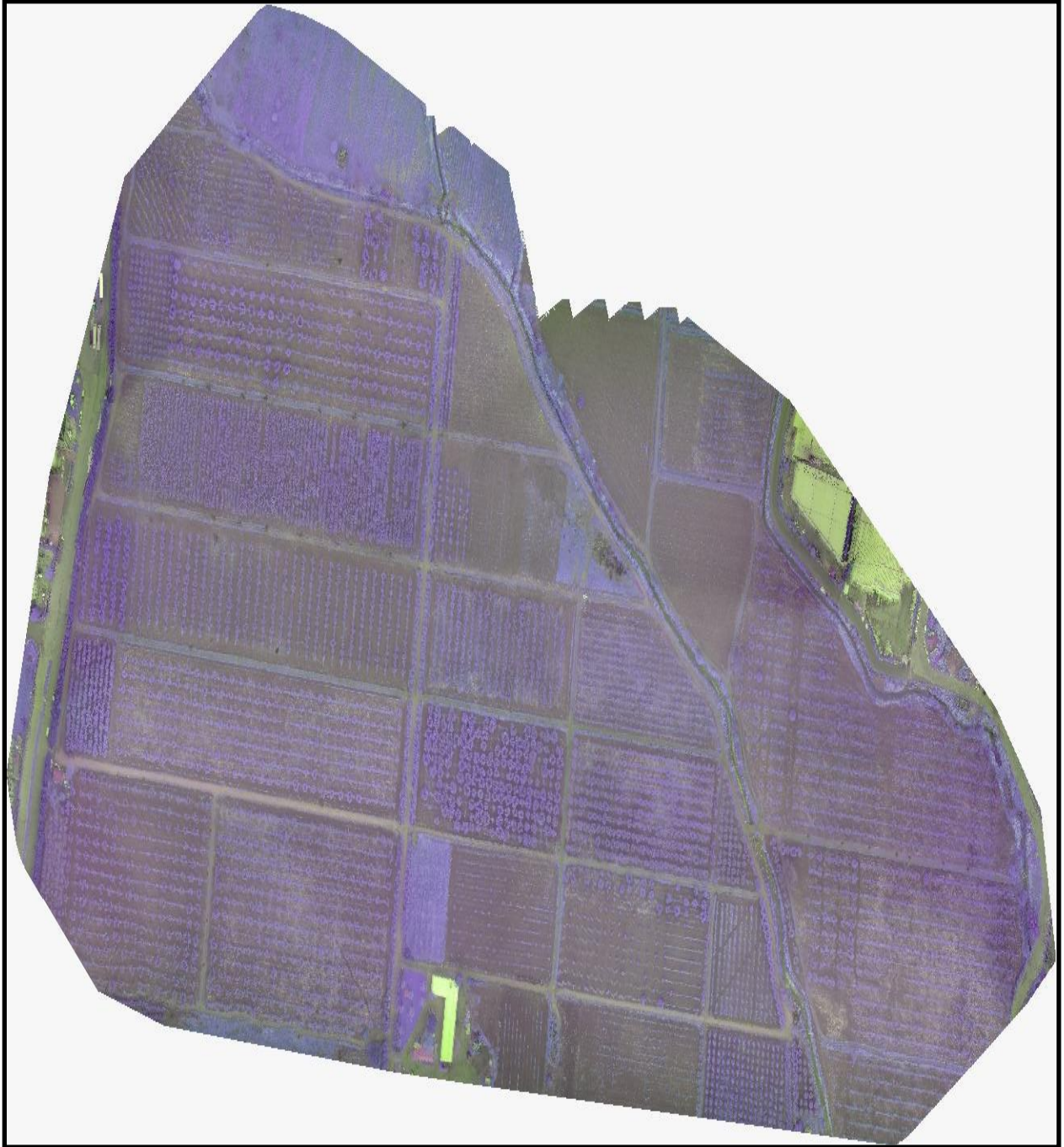
## AGRICULTURAL CAPABILITIES OF THE DRONE

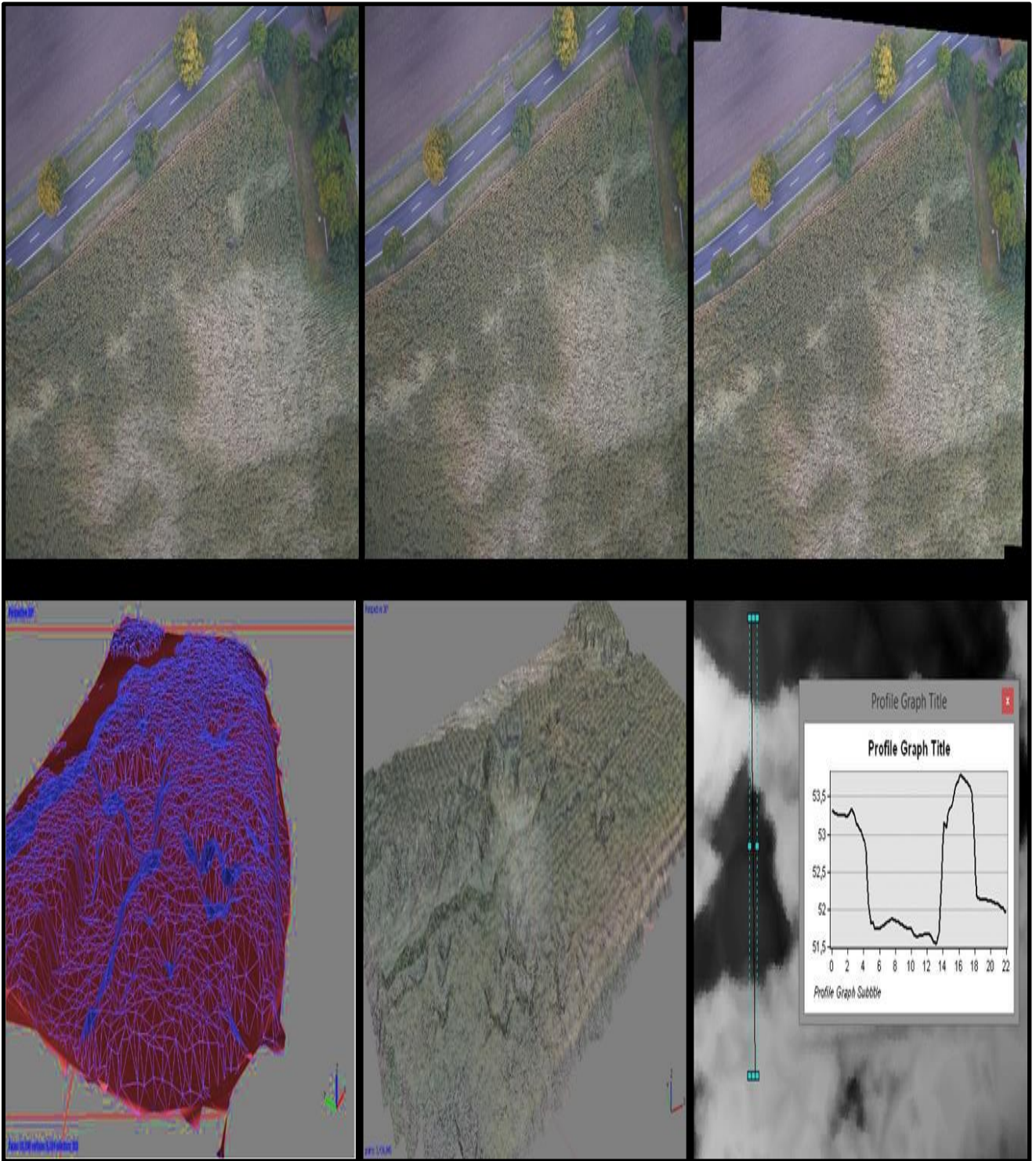


**PLANT (TREE) COUNTING IS POSSIBLE WITH THE DRONE**

## DRONE FLIGHT FOR PHYTOSANITARY

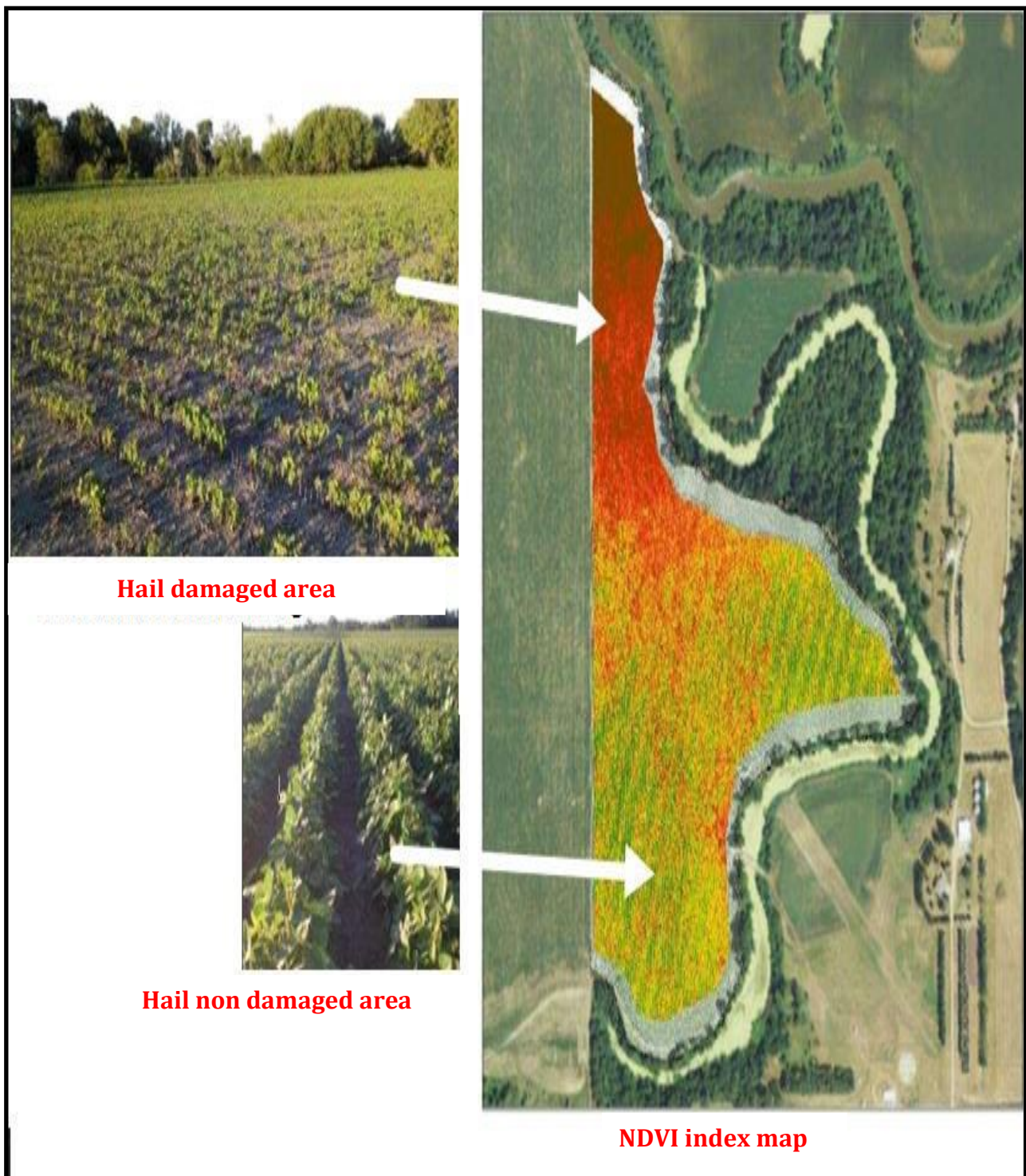
The data obtained are not only images, but also precise coordinates and height data. In this way, especially for insurance, damage into a field can be calculated.



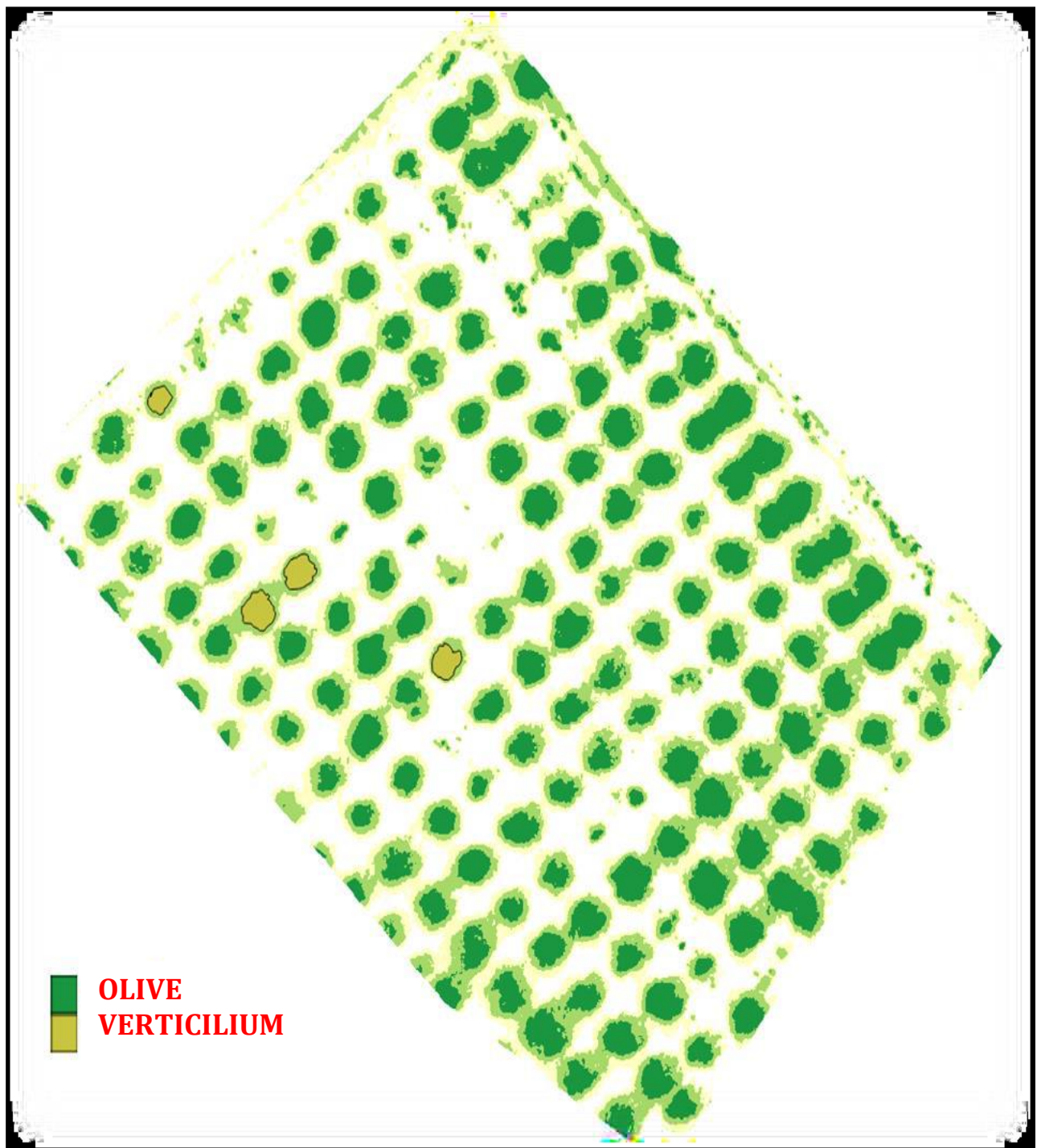


**PRODUCT LOSS DUE TO HAIL IN A DAMAGED FIELD CAN BE CALCULATED WITH HIGH ACCURACY BY EVALUATING FULL PLANT VITALITY INDEX.**

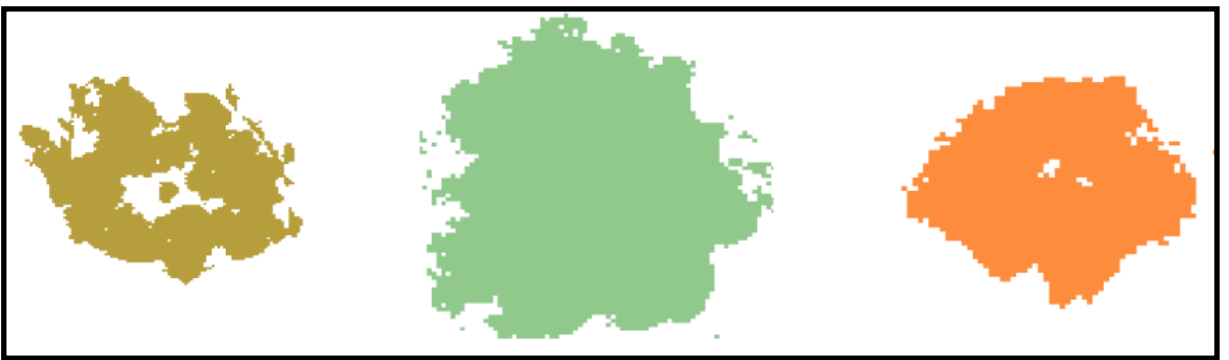
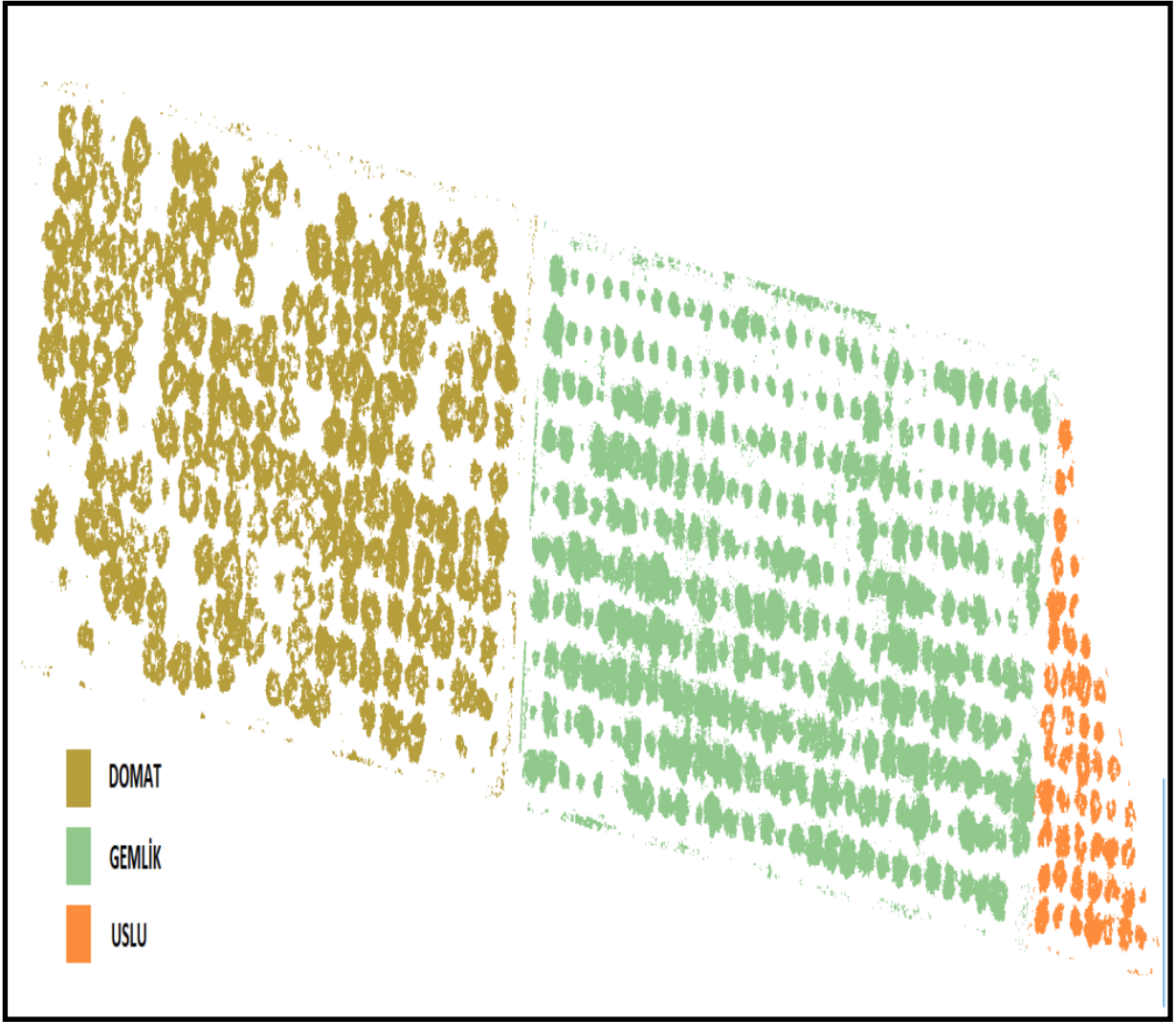




**MULTISPECTRAL ATTRIBUTE WITH IMAGE USING INDEXES IS POSSIBLE. WITH DEEP LEARNING AND ARTIFICIAL INTELLIGENCE METHODS ANALYSIS OF THE PATTERN CAN BE MADE.**



**DEFINING THE TYPES OF PRODUCTS IS ALSO POSSIBLE.  
BELOW ARE THREE DIFFERENT TYPES OF OLIVES IN DIFFERENT  
COLOURED PATTERNS.**



**GEMLİK**

**DOMAT**

**USLU**